

SAO2026 Practical Paper

14 March 2026

The Singapore Astronomy Olympiad Committee would like to thank NTU
Astronomical Society for providing the venues.

1 Star Map A [25]

Using Star map A, answer the following question.

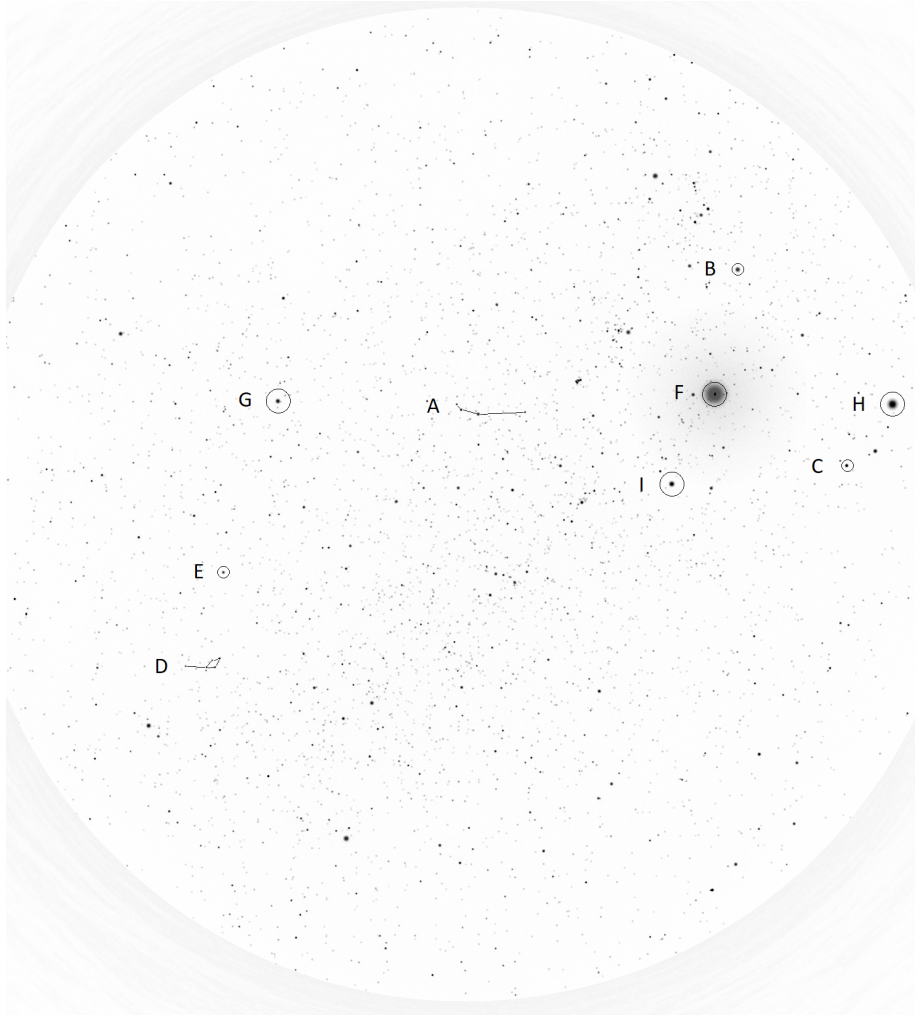


Figure A: Star Map A

1.1 Identify objects A to E

A (constellation) [2m]:

Aries _____

B (star) [2m]:

Betelgeuse _____

C (star) [2m]:

Castor _____

D (constellation) [2m]:

Delphinus _____

E (star) [2m]:

Enif _____

1.2

Hence or otherwise, draw the ecliptic in Star Map A. [2m]

Answer: See below.

1.3

Therefore, identify which object(s) F-H, might be a Solar System Object. Place a tick beside the Solar System Object. [2m]

F: [Yes, Moon]

G: [Yes, Saturn]

H: [Yes, Jupiter]

I: [No, Capella]

1.4

Label the 4 cardinal points and the local meridian in Star Map A
[5m]

Answer: See below.

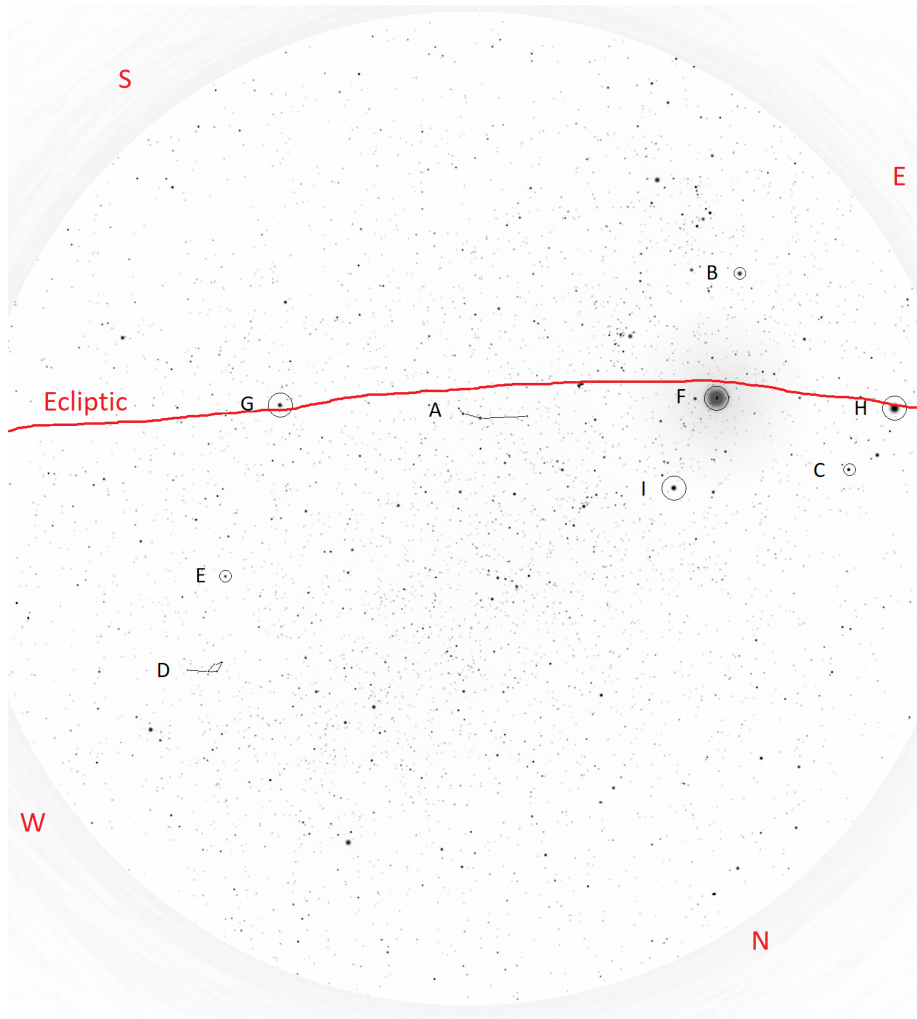


Figure A: Star Map A Answer

1.5

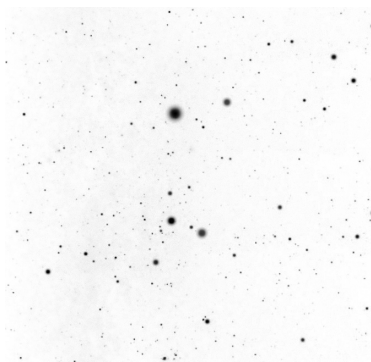
Hence or otherwise, identify the constellations J and K

J [3m]:

Canis Major _____

K [3m]:

Scutum _____



(a) Constellation J



(b) Constellation K

2 Star Map B [20m]

Star Map B shows a snapshot of some constellations in Singapore within a certain altitude and azimuth.

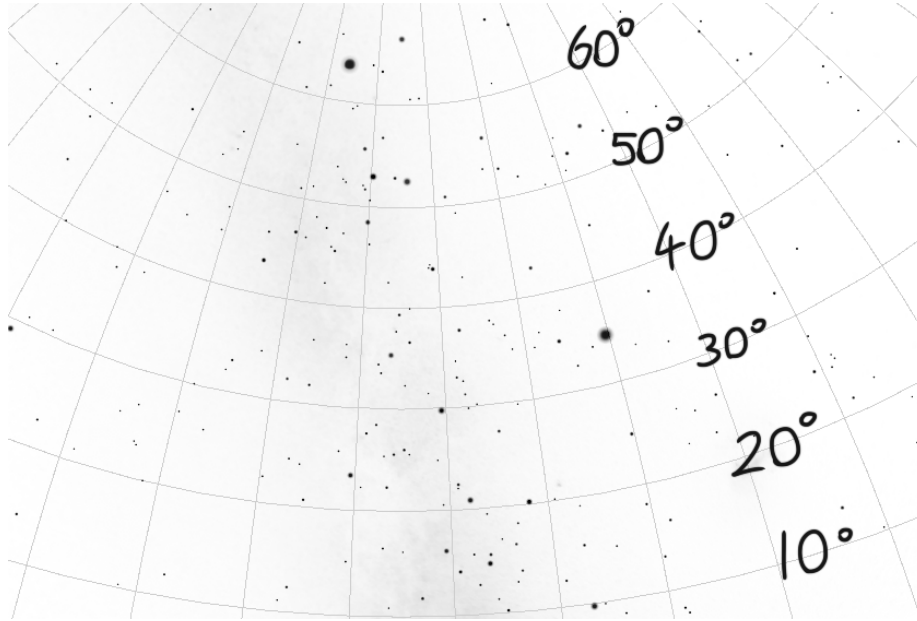


Figure D: Star Map B

In the space below, mark the row with an X if the star in that row can be seen at that time. Note that Figure D only shows a portion of the stars visible at that time, so stars not visible in Figure D could still be visible in the sky then.

(Yes) Procyon [α Canis Minoris]

(Yes) Canopus [α Carinae]

(No) Acrux [α Cruxis]

(Yes) Regulus [α Leonis]

(No) Alkaid [η Ursa Majoris]

Date of image: 13th January 2026, 11pm.
Location: Singapore

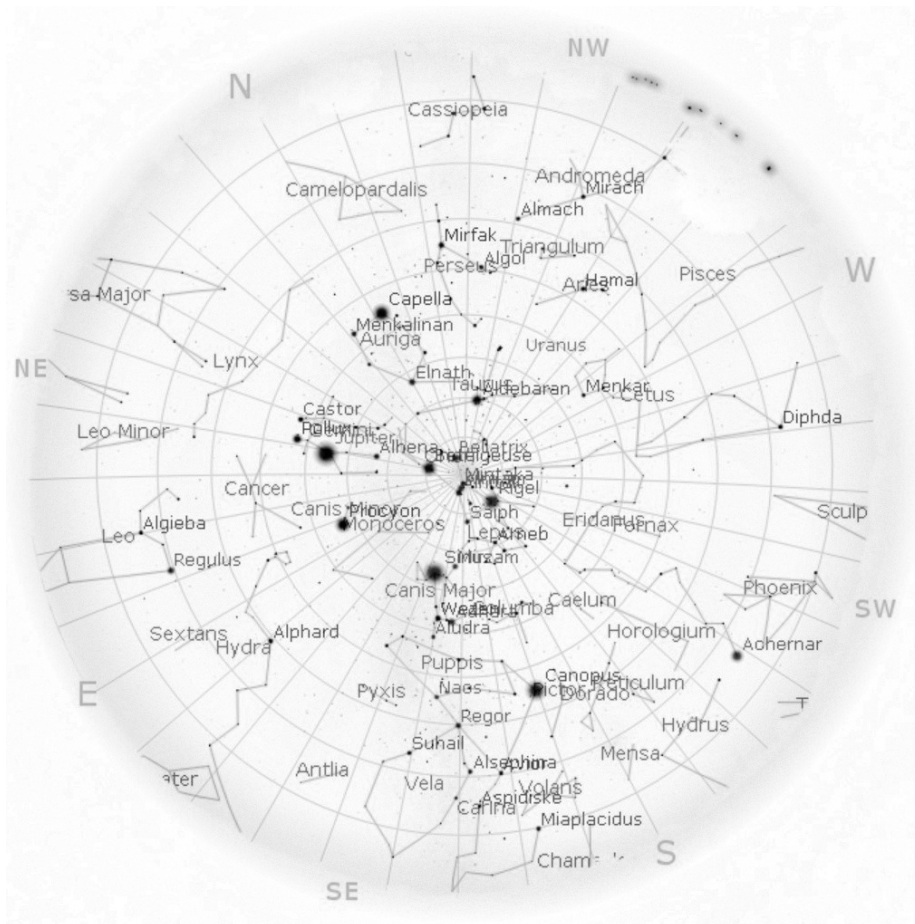


Figure D: Star Map B Answer